

Tint Film Instruction manual

Notice to Customer

• Thank you very much for purchasing our PATLITE products. Read this instruction manual carefully prior to use. Keep this instruction manual in a safe place. Also read this manual when maintenance, inspection, or repair is needed. If you have any questions, contact your PATLITE sales representatives at the offices listed at the end of this document.

1 Read this First

The following symbol classifies and explains the level of harm inflicted when caution is disregarded while using the product.

◆ The following symbols classify the precautions into the following two categories depending on the degree of injury or damage caused by the failure to follow them:

⚠ Caution Indicates a potentially dangerous condition: Failure to follow the instructions may lead to slight injury or property damage.

◆ The following symbols used in this manual are explained below:

- ⊘** This symbol indicates "Prohibited", which should not be carried out by all means.
- !** This symbol indicates "Enforced", which should be observed and carried out by all means.

2 Model Number Configuration

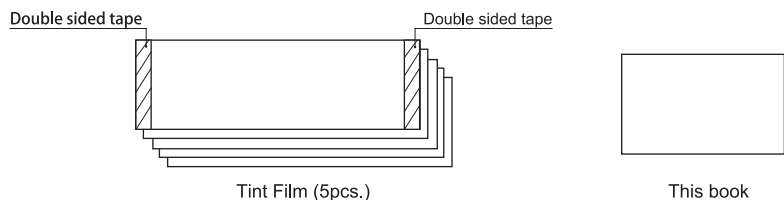
Model	Compatible Model
NHP-TF	NHP-□FB2, NHP-□FV2, PHE-3FB3
NHL-TF	NHL-□FB2, NHL-□FV2

<Note>

1. The compatible model is as of April, 2018. To verify the latest compatible model, please visit our website.
2. Be sure to read the applicable instruction manual for the compatible model in addition to this model.

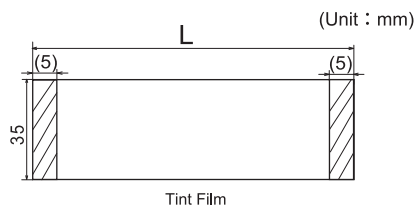
3 Contents

■ NHP-TF/NHL-TF



4 Specifications

■ NHP-TF/NHL-TF

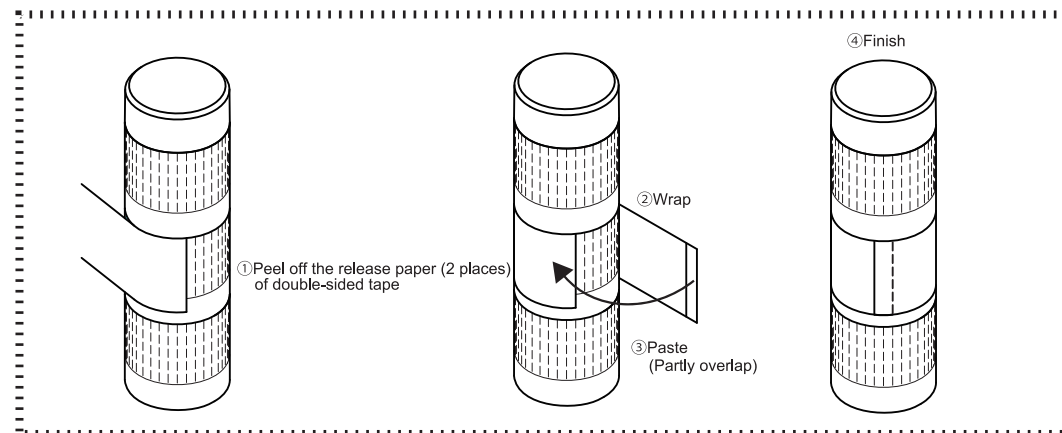


Model	NHP-TF	NHL-TF
L dimension	141mm	204mm
Material	PC	
Operating Ambient Temperature	0°C to +40°C (No Dew or Condensation)	
Storage Ambient Temperature	-10°C to +60°C (No Dew or Condensation)	
Ambient Humidity	20% to 85%RH (No Condensation)	

5 Installation

⚠ Caution

- ⊘** When removing dirt, oil and moisture, please do not wipe it up by volatile medicine and a chemical dustcloth of a benzine and a paint thinner. It may cause deformation or product failure.
- Be careful as the LED unit can not be removed if Tint Film is pasted across a plurality of LED units.
- Do not reuse the pasted Tint Film. The adhesive force of the double-sided tape decrease.
- !** When sticking a Tint film, please remove dirt, oil and moisture.
- Please use it as described in the instruction manual.



PATLITE Corporation G2J

PATLITE Corporation ※Head office	■ www.patlite.com/
PATLITE (U.S.A.) Corporation	■ www.patlite.com/
PATLITE Europe GmbH ※Germany	■ www.patlite.eu/
PATLITE (SINGAPORE) PTE LTD	■ www.patlite-ap.com/
PATLITE (CHINA) Corporation	■ www.patlite.cn/
PATLITE KOREA CO., LTD.	■ www.patlite.co.kr/
PATLITE TAIWAN CO., LTD.	■ www.patlite.tw/
PATLITE (THAILAND) CO., LTD.	■ www.patlite.co.th/
PATLITE MEXICO S.A. de C.V.	■ www.patlite.com.mx/