

# BUZZER UNIT

## Model MP-B

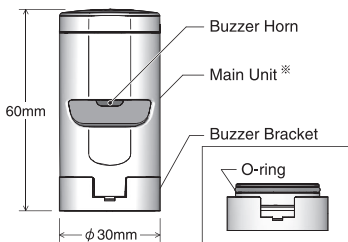
# INSTRUCTION MANUAL

This product is an optional part which is compatible with the Model MP Signal Tower, and includes a buzzer function.

Corresponding Model	Model MP Signal Tower
---------------------	-----------------------

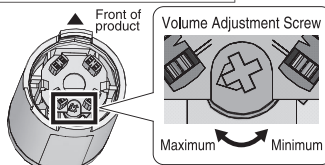
(Note) • This option part will be in effect as of April, 2012. To verify the latest compatible options and model, please visit our homepage.  
 • Henceforth, "Model MP Signal Tower" has been abbreviated to "MP" .

## 1 Part Names and Outer Appearance



(Note) The Buzzer Bracket is separated from the Main Unit when packaged.

### ※ Underside View of Main Unit

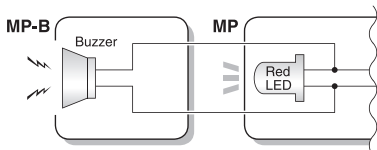


Use a phillips screwdriver to turn the screw in order to adjust the volume. (The volume is set at maximum prior to shipment from the factory.)

**CAUTION** Do not rotate the volume any further than its specified range of movement when adjusting.

## 2 Block Diagram

This product connects to the circuit as shown in the diagram below when used with the MP. (No extra wiring is necessary when this product is attached.)



The buzzer operates in conjunction with the MP's red LED. (The red LED Unit can be stacked on any tier of the MP.)

(Note) Illustration is used only as a guide.

## 3 Installation

The following is the procedure for installing the buzzer onto the MP.

(Note) Refer to the "Model MP-C Instruction Manual" on how to remove the LED Unit.

**⚠ WARNING** Make sure that the power supply is disconnected before installing the MP-B.

### ⚠ CAUTION

Do not apply any force to the Head Cover and the LED Units in the direction of rotation. If this is not observed, damage may occur.

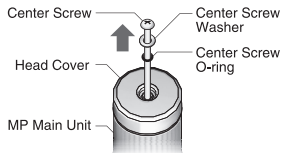
**Do not touch the pin electrodes** of the LED Unit. Failure to comply may result in personal injury. Moreover, the pin electrodes may become bent, causing poor contact or short-circuiting.

**Do not apply excessive force** to any of the parts. Failure to comply may result in damage.



**Sound Pressure might decrease** in an environment where **water is splashing**.

### 1 Remove the MP Center Screw.

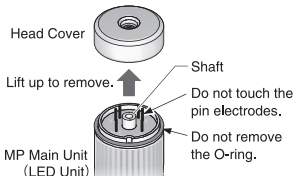


Use a phillips screwdriver to remove the Center Screw on top of the MP.

#### Point

- Be careful not to lose the Center Screw Washer and the Center Screw O-ring.

### 2 Remove the MP Head Cover.

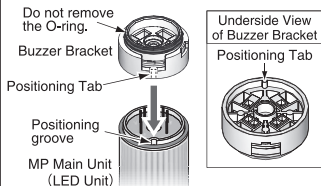


Lift the MP Head Cover up to remove it.

#### Point

- If the LED Unit shaft is dirty, clean it with a cotton swab or something similar. (Do not use chemicals such as thinners, kerosene, gasoline or oil.)
- Store the removed Head Cover for future use.

### 3 Install the Buzzer Bracket.

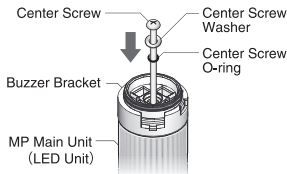


Install the Buzzer Bracket onto the LED Unit of the MP Main Unit.

#### Point

- Align the positioning parts of the Buzzer Bracket and the LED Units when reassembling.

### 4 Tighten the Center Screw.

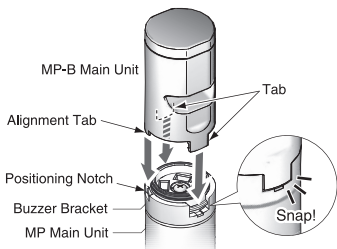


Insert the Center Screw into the Buzzer Bracket, then use a phillips screwdriver to tighten it.

#### Point

- Before inserting the Center Screw, check that there are no gaps between the connections of components such as the LED Units.

## 5 Assemble the MP-B Main Unit.



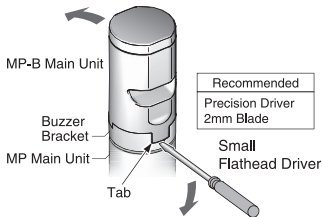
### Point

- Align the Positioning Notch of the MP Main Unit to the Alignment Tab of the MP-B Main Unit when installing.
- Firmly insert the tabs of the MP-B until they snap into place.
- To redirect the Buzzer Horn, change the installation direction of the MP. (Refer to the MP Instruction Manual.)

## 4 MP-B Main Unit Removal

Refer to the following procedure when removing the MP-B Main Unit from the Bracket.

### 1 Gently lift the tab on one side of the MP-B Main Unit.

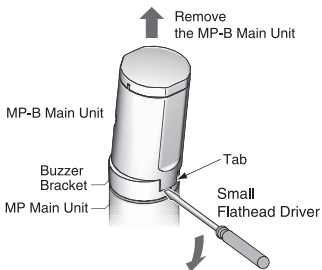


Use a small flathead driver to lift the tab.

### Point

- Be sure not to exert excessive pressure on the tab when removing. Overexertion will result in breaking the tab off the MP-B Main Unit or damaging the Buzzer Bracket.

### 2 Gently lift the tab on the opposite side of the MP-B Main Unit.



After disengaging the tabs on both sides, lift the MP-B Main Unit upward to remove.

## 5 Specifications

Rated Voltage	Installation Location	Maximum surrounding air temperature rating	Power Consumption	Sound Pressure (at 1m)	Mass
DC24V	Indoor use only	60°C	30mA	Approx.80dB	Approx.25g

This device complies with Part 15 of the FCC Rules. Operation is subject to the following two conditions: (1) this device may not cause harmful interference, and (2) this device must accept any interference received, including interference that may cause undesired operation.

This equipment has been tested and found to comply with the limits for a Class A digital device, pursuant to Part 15 of the FCC Rules. These limits are designed to provide reasonable protection against harmful interference when the equipment is operated in a commercial environment. This equipment generates, uses and can radiate radio frequency energy and, if not installed and used in accordance with the instruction manual, may cause harmful interference to radio communications. Operation of this equipment in a residential area is likely to cause harmful interference in which case the user will be required to correct the interference at his own expense.

世界中に「安心・安全・楽楽」をお届けする

株式会社 **パトライト**

J2F

[www.patlite.co.jp](http://www.patlite.co.jp)

[受付]月～金 9:00～17:00

土・日・祝日・当社休業日を除く

●技術・修理相談窓口 (無料) : 0120-497-090

※ご注文・価格・納期等は、販売店または各営業所拠点にお問い合わせください。

**PATLITE Corporation**

G2J

**PATLITE Corporation** ※Head office

■ [www.patlite.com/](http://www.patlite.com/)

**PATLITE (U.S.A.) Corporation**

■ [www.patlite.com/](http://www.patlite.com/)

**PATLITE Europe GmbH** ※Germany

■ [www.patlite.eu/](http://www.patlite.eu/)

**PATLITE (SINGAPORE) PTE LTD**

■ [www.patlite-ap.com/](http://www.patlite-ap.com/)

**PATLITE (CHINA) Corporation**

■ [www.patlite.cn/](http://www.patlite.cn/)

**PATLITE KOREA CO., LTD.**

■ [www.patlite.co.kr/](http://www.patlite.co.kr/)

**PATLITE TAIWAN CO., LTD.**

■ [www.patlite.tw/](http://www.patlite.tw/)

**PATLITE (THAILAND) CO., LTD.**

■ [www.patlite.co.th/](http://www.patlite.co.th/)

**PATLITE MEXICO S.A. de C.V.**

■ [www.patlite.com.mx/](http://www.patlite.com.mx/)

最新の製品情報などがホームページでご覧になれます。

[www.patlite.co.jp](http://www.patlite.co.jp)

The latest product information can be viewed  
on our company's website.

[global.patlite.com](http://global.patlite.com)

(注) ・寸法・仕様および構造などは、改善のため予告なく変更することがあります。

・パトライトおよび PATLITE は、株式会社パトライトの日本及び各国の登録商標または商標です。

(Note) ・ Dimensions, specifications and structure are subject to change for improvement without notice.  
・ PATLITE is a trademark or registered trademark of the PATLITE Corporation in JAPAN and/or other countries.